



Health and Safety Management

Sam Glass
Harvey Group

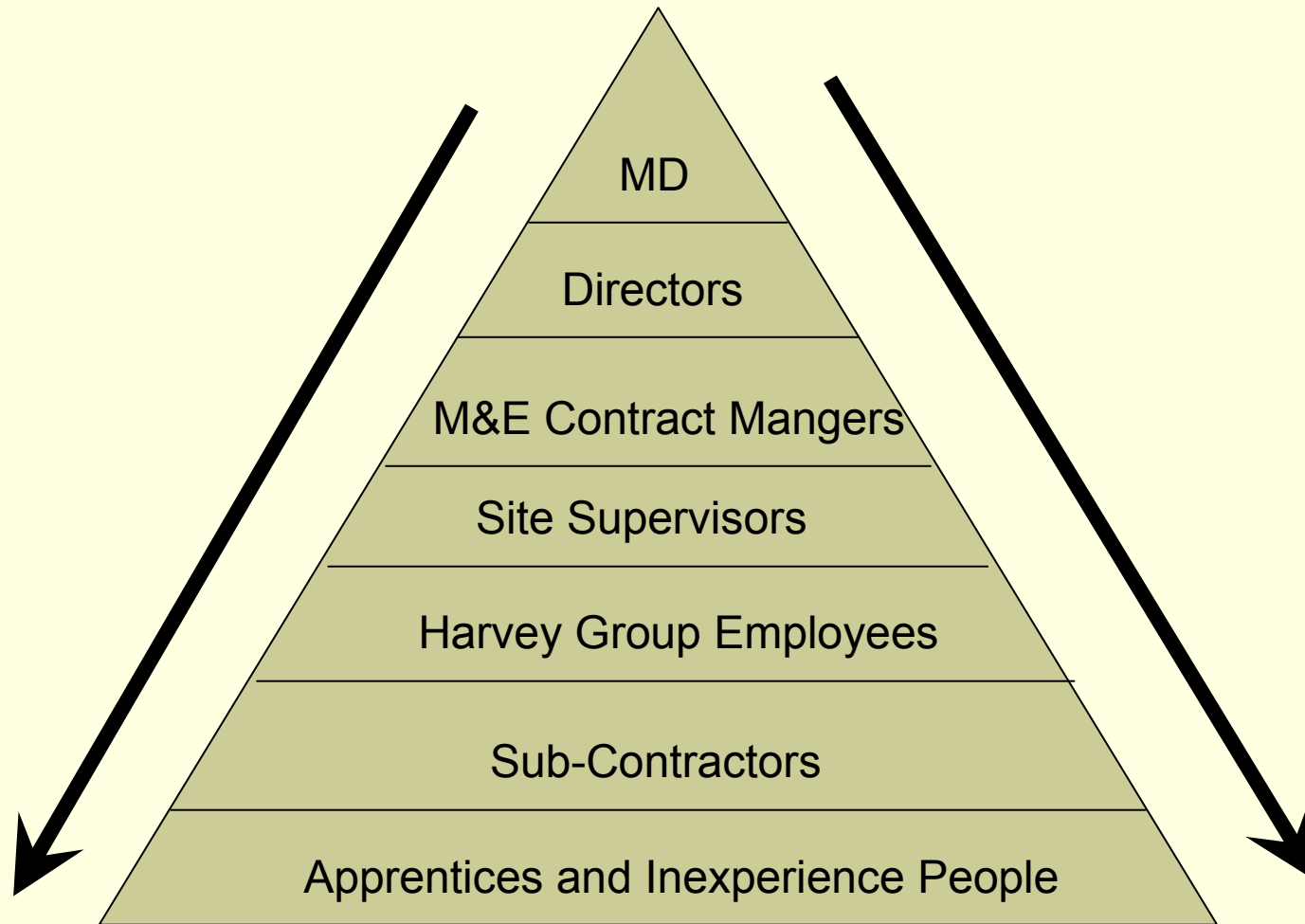


Examples of best Practice of Health and Safety

**Welcome from
Harvey Group**

S
A
F
E
T
Y

Getting the Information through



Bring together to look over the past year H&S



Training of MS/RA

- M&E Contract Managers & Site Supervisors.
- Sub – Contractors.



SAFETY

Getting the correct people involved Health and Safety Plan Task and Activity sheet

6 TASKS, ACTIVITIES, RISKS & HAZARDS. AFBI Hillsborough REC Building											Harvey GROUP plc	
Met or Elect	Task / Activity Planned for	What is required	Anything unusual to note	Timescale	Planned Start Date	Risk / Hazard identified including COSHH Hazards	Pre Control Risk S x P x R	Who might be harmed - HP, S, V, P, U, L, A	Proposed Control Measures	Residual Risk S x P x R	Advice G/L Date	Complete in place? 0 to start Y/N
M/E	Use of Mobile Phones	Observe Site Rules	Lots of Firm Vehicles on this site Do not be tempted to break the rules	Duration of project	28th April 08	Distraction resulting in serious or fatal injuries	3 x 3 = 9	A	Mobile Phones not to be used except at rest breaks in the canteen or off site	3 x 1 = 3	DN / MC	Yes
M/E	Smoking	Observe Site Rules	N / A	Duration of project	28th April 08	Harm to others through passive smoking, Fire	3 x 2 = 6	A	Smoking only allowed at rest breaks and only in the designated area located in the HSJ Site Compound	3 x 1 = 3	DN / MC	Yes
	Site Infrastructure Installation											
M	Installation of Ecoflex Pipework & New Water Main in Trenches	See Task Specific Method & Risk Assessment #61	See Task Specific Method & Risk Assessment #61	8 Weeks	28th April 08	Falls, Personal Injury, Crushing, Broken Limbs	3 x 3 = 9	A	Task Specific MS / RA #61 Also H&J Martin MS RA for trench excavation	3 x 1 = 3	RH / DN	NO
M/E	Particular Bio-Security Issues Which Apply	Refer to Protocol Contained in Existing Environment Section of H&J Health & Safety Plan	New to Us	Duration of Project	28th April 08	Infections, Cross-Contamination	3 x 3 = 9	A	Observe Protocol Contained in Existing Environment Section of H&J Health & Safety Plan	3 x 1 = 3	DN / MC	Yes
E	Installation of Underground Sub-Mains Cabling	See Task Specific Method & Risk Assessment #63	See Task Specific Method & Risk Assessment #63	8 Weeks	28th April 08	Falls, Personal Injury, Crushing, Broken Limbs, Back Strain	3 x 3 = 9	A	Task Specific MS / RA #63	3 x 1 = 3	DB / MC	NO
M/E	Working Alongside Heavy Machinery	See Task Specific Method & Risk Assessment #64	See Task Specific Method & Risk Assessment #64	8 Weeks	28th April 08	Crushing, Broken Limbs, Fatal Injury	3 x 3 = 9	A	Task Specific MS / RA #64	3 x 1 = 3	RH / DB	NO
M	Pressure Testing	Pressure Test Equipment	Long Runs of Plastic See Manufacturers Instructions for Pressure Testing	Various	TBA	Personal Injury, Over Pressurising Plant / Equipment & Pipework	3 x 2 = 6	HP / S	Refer to SNP #67 Safe Pressure Testing	3 x 1 = 3	DN	Yes
	Renewable Energy Centre Installation											
M/E	Floor Pits for Pipe and Cable Entry	Steel Plates by H&J Martin	Pits are 900mm Deep	Duration of REC Construction	28th May 08	Falls, Broken Limbs, Cuts & Lacerations	3 x 2 = 6	A	Covers and Cords to be Provided by H&J Martin	3 x 1 = 3	DN / MC	Yes
		See Task Specific Method & Risk	See Task Specific Method				Competent G/L	Specialist				

F I R S T
C L A S S
S E R V I C E S

May Street - Office Development

SITE EXECUTION PLAN

BY

HARVEY GROUP PLC

Mechanical and Electrical Services

Harvey
G R O U P p l c

BUILDING SERVICES CONTRACTORS
14 GLENGELLEN ROAD,
GLENCO RMLEY
NEWTOWNABBEEY
BT36 7FP
Tel: (028) 90 34244
Fax: (028) 90 34249

Page 1 of 22

S
A
F
E
T
Y

Getting the information Through



Getting the Information Through



QEST TELEGRAPH

Site / Office Edition



07 Apr 2008

Mobile Phones on site – company position

• **MAN KILLED** on BELFAST BUILDING SITE whilst on **MOBILE PHONE**

• **HG Operatives only to use during tea-break or lunch break – all other times to be switched off.**

• **Only use phone in safe location – e.g. canteen area**
• **Exceptions – if required to be contacted – provide site supervisor number.**



Site Supervisors - Mobile Phone use on site

- **Need phones onsite** (YES)
- **Find a safe place to use** (YES)
- **Use in unsafe area** (NO)
- **If available, use Land Line** (YES)



Unsafe area



Unsafe area

Be alert, Stay safe

Mobile Phones in your vehicle

Don't make calls whilst driving.

Incoming calls, pull over to take call.

Law is tending towards banning use of hands free while driving vehicle.



QEST TELEGRAPH

Office Edition

24.03.2008

Quick Thinking averts major risk to operatives

Due to the vigilance of one of our Supervisors, on a refurbishment Contract, operatives have been averted from the risk of Asbestos. It was discovered above a ceiling being removed.

Prior to starting any refurbishment work, check the Asbestos Register for any Asbestos/clarify the type, but don't assume it's the final word! Take care when exposing concealed services – no one may have seen these when producing the asbestos register!

IF IN DOUBT →

STOP

Asbestos comes in principally three forms.

Chrysotile – White in colour

Amosite – Brown in colour

Crocidolite – Blue in colour

Asbestos (Sheet in relation to Asbestos is being related, and will be issued in the next week or so).

Chest, Heart and Stroke Assessments



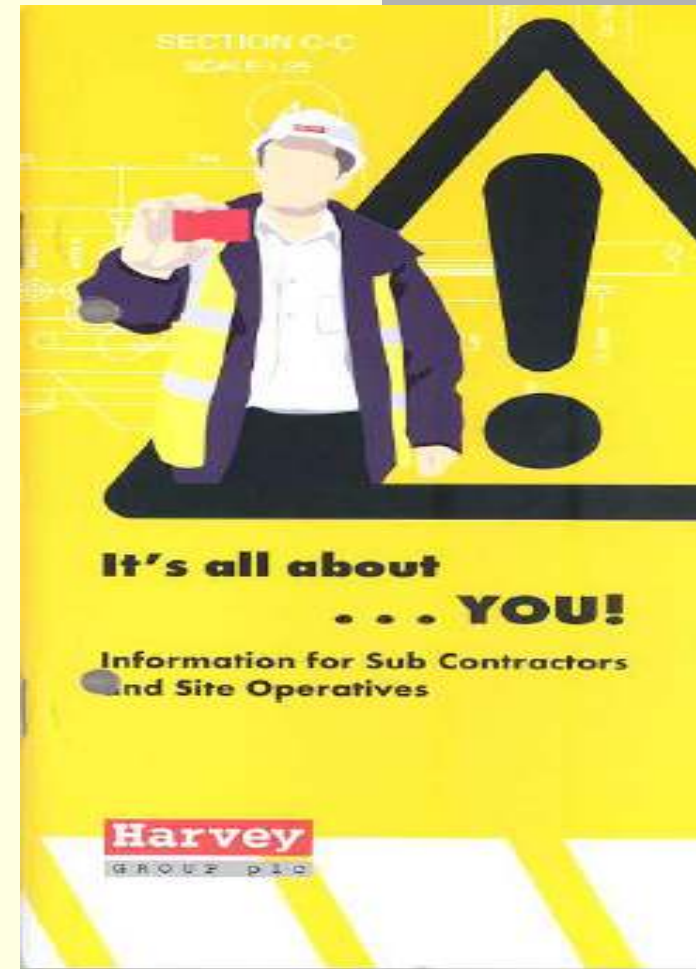
Remember, if you have not already returned your attendance slip, please do so, as a matter of urgency. Remember to complete the Consent Form and take with you on the day. Enjoy the slip in the pool.

Weekly Check Sheets

To help the entire team –
All Weekly Check Sheets must be in
each Friday by 1.00pm.

S
A
F
E
T
Y

Getting the Information Through



Getting the Information Through

- Thank you for listening.
- Just one last item. Every one has a responsible for Health and Safety to others and to themselves.
- Listen to this Poem.

I Chose to Look the Other Way

**I could have saved a life today,
But I chose to look the other way.**

**It wasn't that I didn't care,
I had the time, and I was there.
But I didn't want to seem a fool,
Or argue over a safety rule.**

**I knew he'd done the job before,
If I called it wrong, he might get sore.
The chances didn't seem that bad,
I've done the same, he knew I had.
So I shook my head and walked on by
He knew the risks as well as I.
He took the chance, I closed an eye,
And with that act, I let him die.**

**I could have saved a life today,
But I chose to look the other way.**

**Now every time I see his wife,
I'll know I should have saved his life.
That guilt is something I must bear,
But it isn't something you need to share
If you see a risk that others take,
That puts their health or life at stake.**

**The question asked, or thing you say,
Could help them live another day.**

**If you see a risk and walk away,
Then hope you never have to say,
I could have saved a life today,
But I chose to look the other way.**

S
A
F
E
T
Y

Lets all Get the information Through

Thank You.